

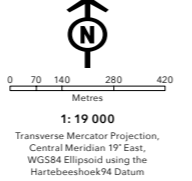
- | | | |
|---|---|--|
| <ul style="list-style-type: none"> ● Accommodation and food service activities ● Administrative and support service activities ● Agriculture, forestry and fishing ● Arts, entertainment and recreation ● Construction ● Education ● Electricity, gas, steam and air-conditioning supply ● Financial and insurance activities ● Human health and social work activities ● Information and communication ● Manufacturing ● No activity | <ul style="list-style-type: none"> ● Other service activities ● Professional, scientific and technical service activities ● Public administration and defence, compulsory social security service activities ● Real estate activities ● Transportation and storage ● Unattainable ● Vacant unit ● Water reserve ● Water supply, sewerage, waste management and remediation activities ● Wholesale and retail trade, repair of motor vehicles and motorcycles ● IRT bus stops | <ul style="list-style-type: none"> ■ Road reserve ■ Under construction ■ Vacant land ■ Private residence ■ Suburbs ■ Land parcel ■ Greenbelt ■ Open space ■ Vacant building ■ Wetlands |
|---|---|--|



THIS MAP WAS COMPILED BY:
CITY MAPS
 Development Information and GIS
 Tel: +27 21 487 2711
 Fax: +27 21 487 2821
 city.maps@capetown.gov.za

Please note:

- Business names, economic activity and contact details were collected through primary data collection.
- Business contact details were verified directly from the business' website.
- In the event that the name or economic activity of a business could not be identified during primary data collection and it does not have an active website or contact details available to confirm business details, it has been listed as unattainable.



INDUSTRIAL SURVEY
ELSIES RIVER INDUSTRIA



CITY OF CAPE TOWN
ISIXEKO SASEKAPA
STAD KAAPSTAD



Produced by Enterprise and Investment and Organisational, Policy and Planning Departments: Directorate of the Mayor

For more information on this industrial area contact:
 Economic.Research@capetown.gov.za



Elsies River Industria | 2017

Making progress possible. Together.

ELSIES RIVER INDUSTRIA AT A GLANCE

The industrial node Elsie River is one of the six Voortrekker Road Corridor Industrial areas in the metropolitan area of the City of Cape Town, while the others are Ndbeni Industria, Parow Industria, Sack's Circle Industria, Stikland Industria and Triangle Farm Industria. Elsie River Industria is situated in the Northern Suburbs which is easily accessible from the N1 and N2 as well as the Cape Town International Airport.

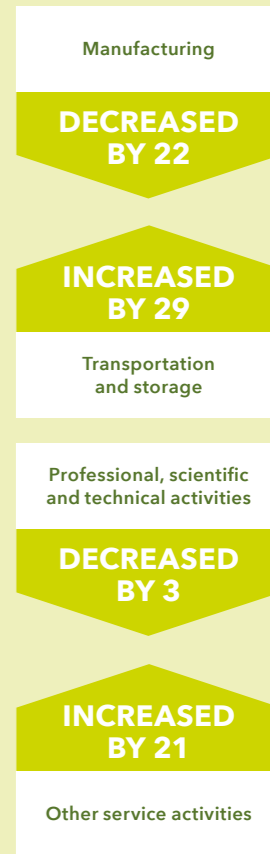
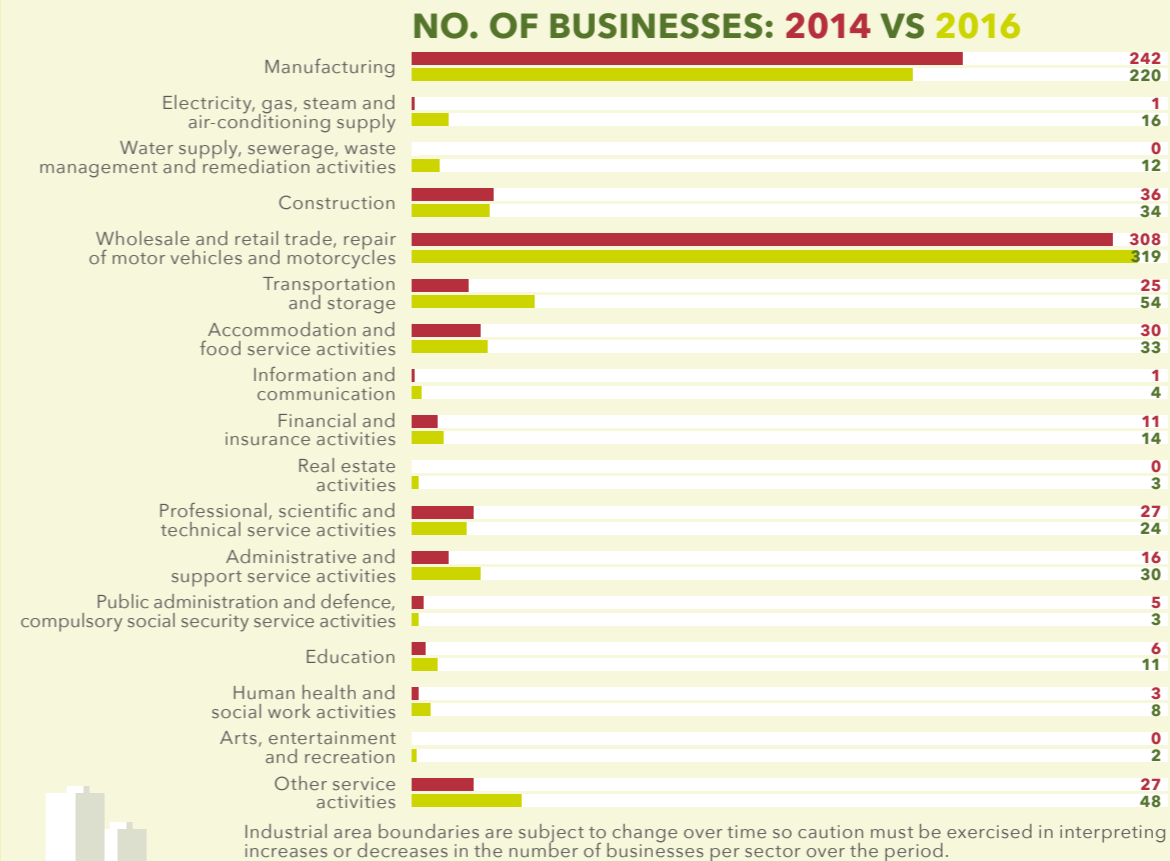
Elsie River is mapped across 745 land parcels of which 88% or 657 land parcels is occupied by economic activity and the remaining 12% or 88 land parcels of these is not.

The 657 land parcels that are economically active in the Elsie River Industrial area host 828 businesses. Of the 828 businesses, 799 businesses' economic activity could be identified while 29 businesses' economic activity could not.

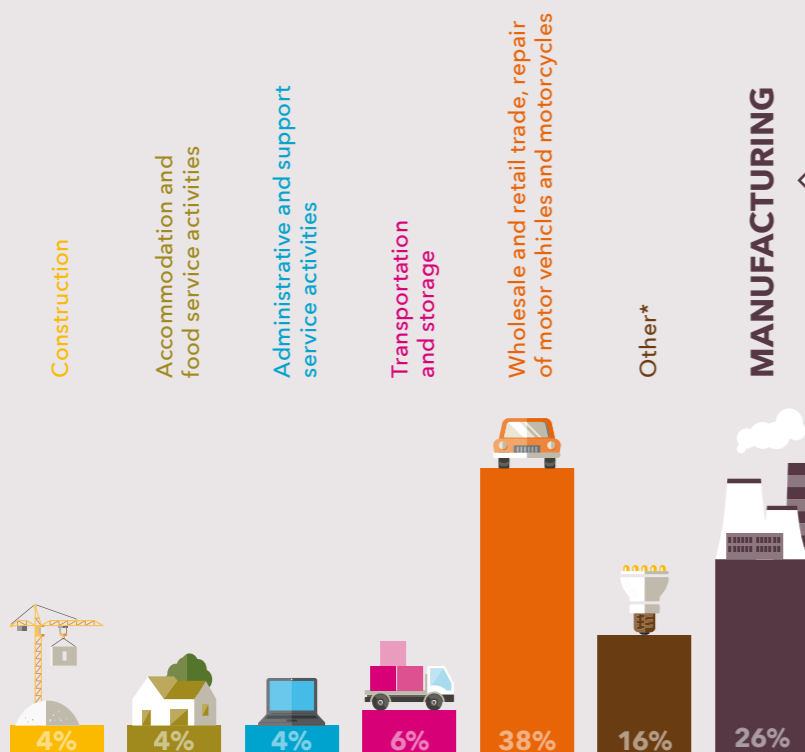
745 LAND PARCELS **828 BUSINESSES**



TREND IN ECONOMIC ACTIVITY BETWEEN 2014 AND 2016



ECONOMIC ACTIVITY OF BUSINESSES



Number of manufacturing businesses per division

Basic metals	2
Beverages	1
Computer, electronic and optical products	2
Chemicals and chemical products	20
Electrical equipment	3
Fabricated metal products, excluding machinery and equipment	60
Food products	6
Furniture	18
Leather and related products	2
Machinery and equipment not classified elsewhere	9
Motor vehicles, trailers and semi-trailers	8
Other manufacturing	3
Other non-metallic mineral products	3
Other transport equipment	2
Repair and installation of machinery and equipment	9
Rubber and plastic products	25
Textiles	22
Wearing apparel	7
Wood and product of wood and cork, except furniture; manufacture of articles of straw and plaiting materials	3

*Arts, entertainment and recreation; Education; Electricity, gas, steam and air conditioning supply; Financial and insurance activities; Human health and social work activities; Information and communication; Other service activities; Professional, scientific and technical activities; Public administration and defence, compulsory social security; Real estate activities; Water supply, sewerage, waste management and remediation activities

PROPERTIES AVAILABLE

19
VACANT LAND PARCELS

RANGE OF SQM LAND:
45 000 m² - 56 000 m²

LAND PARCEL SIZE RANGE:



15
VACANT BUILDINGS

RANGE OF SQM LAND*:
15 000 m² - 19 000 m²

LAND PARCEL SIZE RANGE:



● 0 - 4 999 m² ● 5 000 - 9 999 m² ● 10 000 - 49 999 m² ● 50 000 - 99 000 m² ● 100 000+ m²

*sqm of land parcel on which the business sits.